

YEAR IN REVIEW

A SNAPSHOT OF OUR ACTIVITY FROM APRIL 2024 - MARCH 2025

Funding Primary Care Research



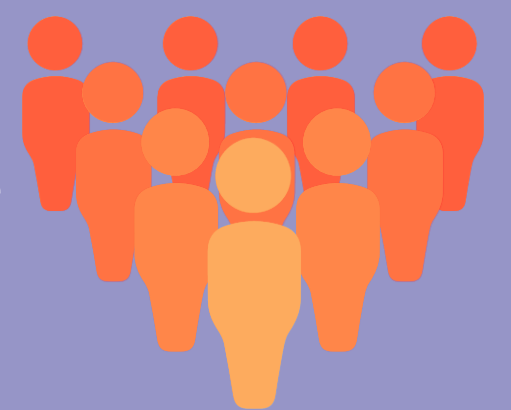
**31 projects funded |
£3.8 mil+ invested in research**

- Two funding rounds completed
- Research addressing health inequalities
- Research funded aim to improve health for people living with diabetes, multiple long-term conditions and heart failure.

Strengthening Public Involvement

**150+ public partners involved |
£120k invested in PPIE**

- SPCR Public Steering Group established with 19 diverse public members appointed
- Joined the Shared Commitment to Public Involvement
- Supporting innovative & creative involvement with under-served communities



Supporting Future Researchers

134 early career researchers supported

- 548 applications received for undergrad internships
- International placements supported
- Mix of skills: GPs, Pharmacists, Physios, Dentists, Nurses



Prioritising Inclusion

- Research Inclusion Strategy developed
- Cultural competency training delivered
- Equality, diversity & inclusion training provided for award holders



Supporting Collaboration



- New partnerships with communities, charities, NHS, & other external stakeholders
- Collaborative research teams across SPCR members and beyond
- Projects led from new institutions

Creating Impact

- SPCR research is improving care for older adults, ethnic minorities, and underserved groups.
- Public partners helped to shape funding decision-making processes
- SPCR funded research has contributed to policy-making



Find out more & get in touch

