

Better public involvement for better research: putting the National Standards for Public Involvement into practice

Steven Blackburn

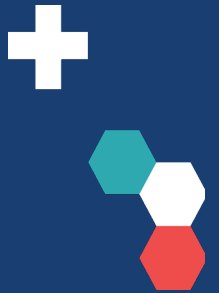
School for Primary, Community and Social Care, Keele University

Paula Wray & Hothan Esmael

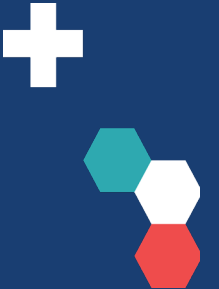
UK Standards Partnership Team

Overview

- Background to the National Standards
- Keele INSPIRE test-bed project
- Putting the Standards into practice in studies
- Examples from the Test Beds
- Take home message



We all know why we do public involvement and why it is important....or at least we should know?



Accountability

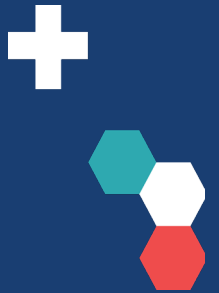
Ethical right

Democratic
right

Adds value to
research:

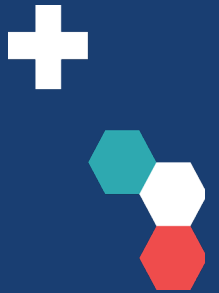
Quality, Relevance, effectiveness





But....how should we do public involvement?





To improve the **quality** and **consistency**
of public involvement in research



UK Standards for Public Involvement



INCLUSIVE OPPORTUNITIES: Offer public involvement opportunities that are accessible and that reach people and groups according to research needs.



WORKING TOGETHER: Working together in a way that values all contributions, and that builds and sustains mutually respectful and productive relationships.



SUPPORT & LEARNING: Offer and promote support and learning that builds confidence and skills for public involvement in research.



COMMUNICATIONS: Use plain language for well-timed and relevant communications as part of involvement plans and activities.



IMPACT: Seek improvement by identifying and sharing the difference that public involvement makes to research.



GOVERNANCE: Involve the public in research management, regulation, leadership and decision making.



Development of the Standards



Pilot Sites



Palliative and End of Life Care Research, Glasgow

Northern Ireland Cerebral Palsy Register (NICPR), Queen's University Belfast

Kidney Patient Involvement Network (KPIN), Salford

Public Programmes team, Manchester University NHS Trust

Wales School for Social Care Research and The Centre for Ageing and Dementia Research, Swansea

Asthma UK Centre for Applied Research, Edinburgh

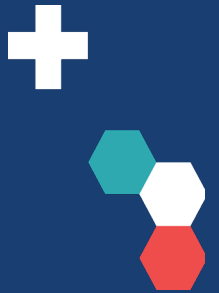
Sheffield Teaching Hospitals NHS Foundation Trust

School for Primary Community and Social Care, Keele

Royal College of Obstetricians and Gynaecologists' (RCOG) Women's Network

Royal College of Speech and Language Therapists





INSPIRE
Implementing the **N**ational **S**tandards
for **P**ublic **I**nvolvement in **R**esearch
Environments

Keele University



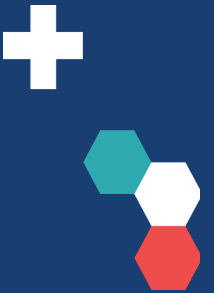
Audit and reflect on
current practice

Implement all six
National Standards



Assess improvement on
the quality and visibility
of public involvement

Ensure successes and
learning are shared



Audit Results



0 PPIE activity **not currently delivered**

★ PPIE activity delivered to **good level** of quality, but with **room** for improvement

★★ PPIE activity delivered to a **high level** of quality

Number	Standard	% Indicators rated High quality	
		Initial Audit	Final Audit
4	Communications	38	72
5	Impact	44	61
6	Governance	50	62
1	Inclusive Opportunities	53	70
2	Working Together	58	67
3	Support and Learning	70	77

New resources and initiatives



Inclusive Opportunities

- Diversity & Inclusion Policy
- Recruitment Plan
- Good practice guide

Working together

- Role descriptions
- Good practice guide (TSCs, public co-applicants)
- PI Advisor role with RDS
- Co-develop PI Strategy

Support & Learning

- 'RUG-Buddy' support and mentoring
- New induction
- Introduction to email course
- Guide for supporting emotional needs

Communications

- Communications Plan
- Good practice guide for communication
- Improved Feedback process

Impact

- Brief guide for capturing impact
- Outcomes form
- Accessible annual report

Governance

- Reward & Recognition Policy
- Role of RUG Steering Committee letter
- TSC and public co-applicant guides



Standards into practice



Inclusive Opportunities

- Who are the intended end users of this research?
- How will you find them to involve them?
- What can you do to make it possible for people to be involved?

Working Together

- Are you clear about the purpose of planned involvement activities?
- Will everyone be clear about each other's roles and how will you make decisions together?

Support & Learning

- Will the people involved need any support (named contact in the team, etc) or training?
- Is there a budget to cover fees and expenses (including things such as carer costs where appropriate)?

Communication

- How will you keep stakeholders informed about the project?
- What different methods of communication might you need to consider?
- How will public contributors feedback about their experience of being involved?

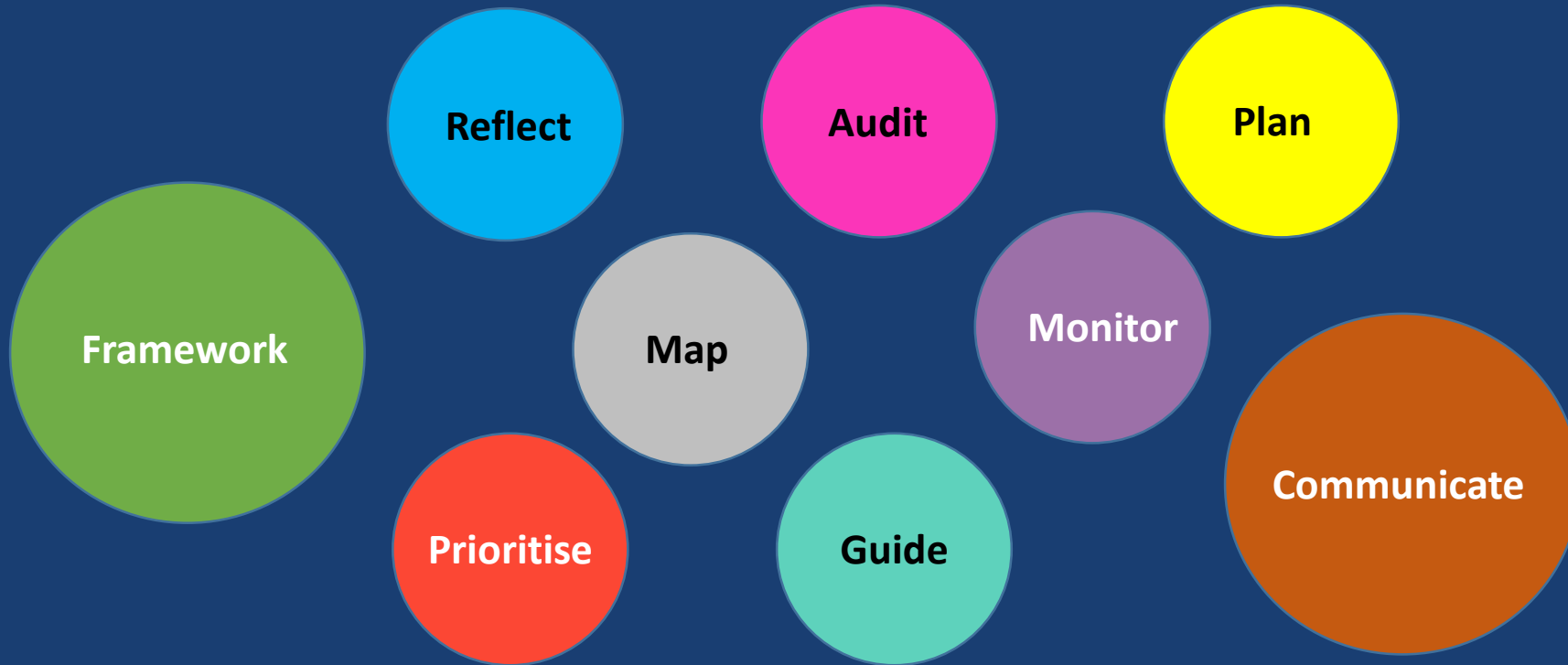
Impact

- What can/might change in the project and how do you intend to capture/monitor this?
- How might you learn from this experience?

Governance

- Do you have clear processes and policies to support the involvement?
- How are public contributors involved in decision making within your organisation/team/project?

Standards pilot projects – a variety of approaches

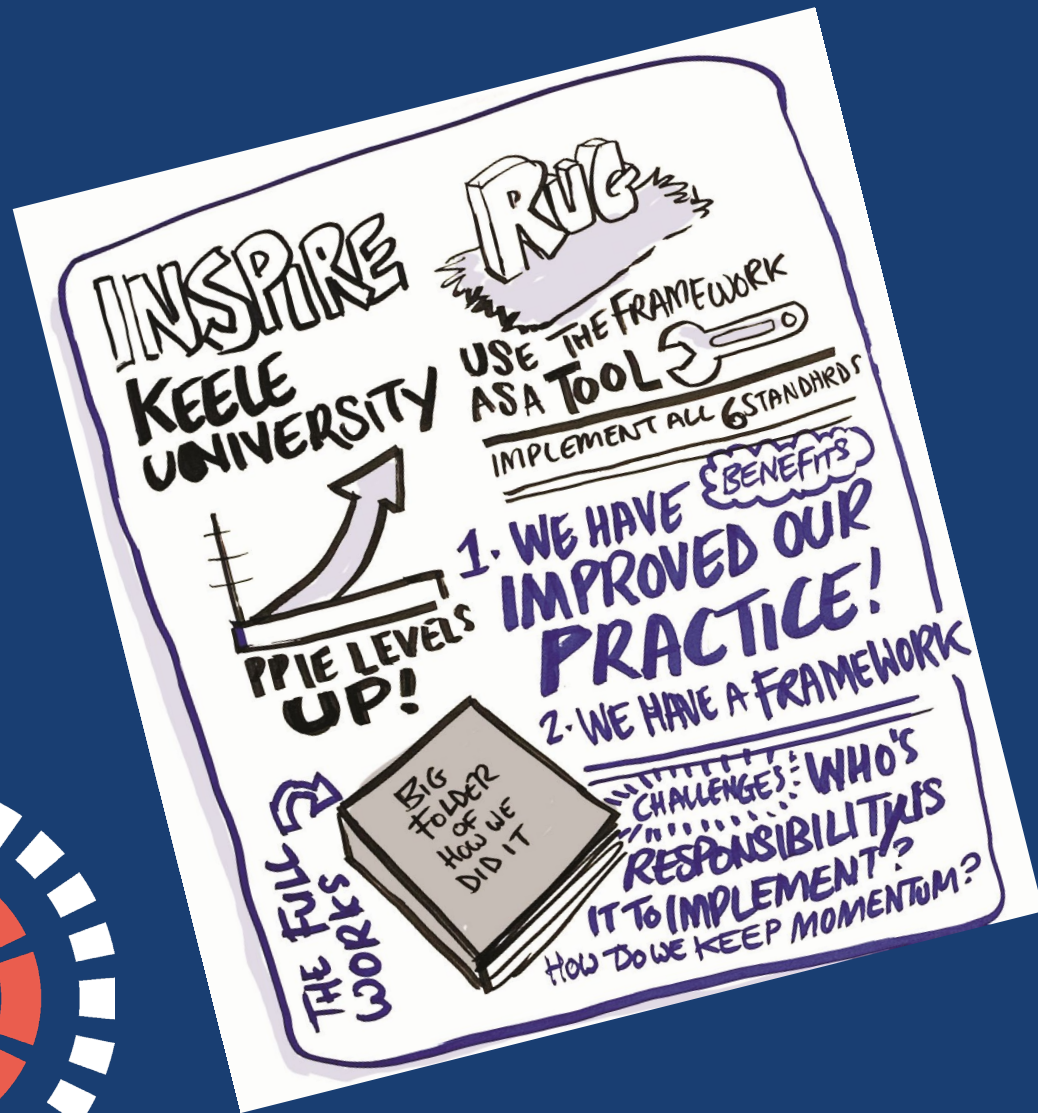


The Future of the Standards

- Improving PPIE practice, providing examples of good practice
- Supporting leadership and accountability for involvement within research organisations – ‘PPIE is everyone’s job’
- No single way of using the standards - how they are used will be influenced by many issues, such as the purpose of involvement and the amount of resources (money, people, skills) available.



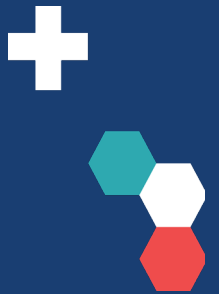
Take home message



1. Don't be afraid to use the standards –experiment and adapt to your research/project/context

2. Look for and use existing resources/materials – there are many online PPIE resources already available.

3. Seek support and advice from your organisation's PPIE contact/team



Resources and information

- **UK Standards for Public Involvement website:**
<https://sites.google.com/nih.ac.uk/pi-standards/home>
- **INVOLVE website:** <https://www.invo.org.uk/>
- **Learning for Involvement website:**
<http://learningforinvolvement.org.uk/>
- **Health Research Authority – Public Involvement:**
<https://www.hra.nhs.uk/planning-and-improving-research/best-practice/public-involvement/>



Acknowledgements



The Keele INSPIRE project is funded by the National Institute for Health Research (NIHR) School for Primary Care Research (project reference 440). The views expressed are those of the author(s) and not necessarily those of the NIHR or the Department of Health and Social Care.

Thanks to:

- The UK Partnership Development Team for their support and advice
- Carol Rhodes, PPIE Advisor at Keele University
- The Research User Group Steering Group for their great ideas, hard work and patience
- Versus Arthritis for their support of the Patient and Public Involvement and Engagement at Keele

