

Welcome to the latest edition of the NIHR School for Primary Care Research (SPCR) newsletter.

This edition includes a variety of news, updates, and insights from across the School. We are pleased to spotlight the launch of the Public Involvement, Engagement and Dissemination Enablement Fund, designed to enhance inclusive and meaningful collaboration with communities. You'll also find highlights from recent SPCR-funded publications and information on forthcoming events—including the Masterclass series and mental health seminars—providing further opportunities to connect with the School's research and ongoing initiatives.

News:

Congratulations to Dr Kelly Birtwell | Outstanding Early Career Researcher Award

Congratulations to SPCR colleague, Dr Kelly Birtwell, who has recently been awarded an RCGP/SAPC Outstanding Early Career Researcher Award.



[READ MORE](#)

NIHR Be Part of Research | SPCR RAPID IMMUNE TEST study

As part of this year's NIHR Be Part of Research campaign, 20 May to 12 June, Andrew Turner and Emily Brown from the University of Bristol share details of their SPCR-funded research involving participants.



[READ MORE](#)

SPCR-Funded Research Wins 2025 Sage Prize for Innovation and Excellence

Congratulations to SPCR colleagues Louise Laverty, Katherine Checkland, and Sharon Spooner, who are joint winners of the 2025 Sage Prize for Innovation and Excellence.



[READ MORE](#)

Blog Posts:

Research as a general dentist – an exciting career path

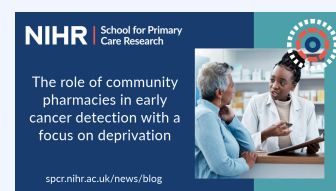
James Coughlan reflects on his experiences as a general dental practitioner engaging in health research, offering insights into the expanding role of academic inquiry within primary dental care.



[READ MORE](#)

The role of community pharmacies in early cancer detection with a focus on deprivation

Community pharmacies can play a key role in early cancer detection, especially in deprived areas. Dr Judit Konya, from Collaboration for Academic Primary Care (APEX), Exeter, shares an update on her research.



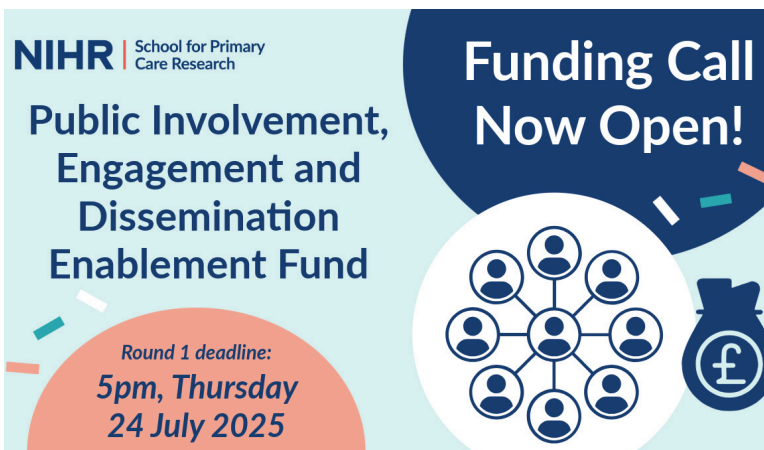
[READ MORE](#)

Reflexivity and the Risks of Joint Roles in Researching Perinatal Anxiety: Insights from a mother and Researcher

Carolyn Chew-Graham and Noureen Shivji from Keele University reflect on their experiences conducting the SPCR-funded CLASP study.



[READ MORE](#)



NIHR | School for Primary Care Research

Public Involvement, Engagement and Dissemination Enablement Fund

Funding Call Now Open!

Round 1 deadline:
5pm, Thursday 24 July 2025

Public Involvement, Engagement and Dissemination Enablement Fund

The SPCR have launched a new funding call to enable researchers and member departments to extend on their involvement, engagement and dissemination activities to foster greater inclusion and diversity of public and communities in research.

Round 1 deadline: Thursday 24th July 2025 by 5pm

[READ MORE](#)

Researcher Spotlight:



NIHR | School for Primary Care Research

SPCR Researcher Spotlight

Dr Bethan Treadgold and Dr Sophie Orton

Impact of continued SPCR funding and long-term connection

We are pleased to share the next edition of our SPCR Researcher Spotlight series, featuring two of our researchers, Dr. Bethan Treadgold from the University of Exeter and Dr. Sophie Orton from the University of Nottingham.

This series highlights the impact of continued SPCR research capacity and development funding since its introduction in 2010.

[READ MORE](#)

SPCR Masterclass:



NIHR | School for Primary Care Research

SPCR Masterclass: NIHR Leadership and Development Programme

spcr.nihr.ac.uk/career-development/SPCRmasterclasses

NIHR Leadership and Development Programme.

Thursday, 19 June 2025, 11am to 12pm

[REGISTER NOW](#)

NIHR Three Schools' Updates:

New Mental Elf Video Series to Mark Mental Health Awareness Week

The Mental Elf launched a new video series for Mental Health Awareness Week in May, spotlighting key priorities in mental health research.



[READ MORE](#)

Three NIHR Research Schools' Host Grant Writing Workshop to Support Researchers

The NIHR Three Schools' recently funded a grant writing workshop led by Professor Sue Ziebland, supporting early to mid-career researchers in developing stronger funding applications.



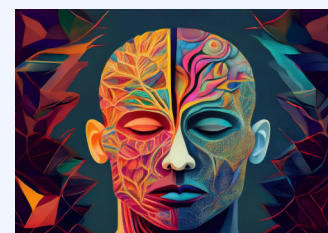
[READ MORE](#)

Mental Health Programme Online Seminars

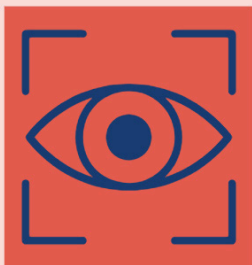
Participatory modelling focusing on stakeholder engagement

Tuesday, 15 July 2025, 12pm to 1pm

[REGISTER NOW](#)



IN Focus:



Mental Health Awareness Week

12 - 18 May 2025

SPCR IN Focus | Mental Health Awareness Week 2025

To mark Mental Health Awareness Week 2025 in May, the NIHR School for Primary Care Research (SPCR) highlighted some projects that demonstrate the power of community in supporting mental health and wellbeing.

[READ MORE](#)

Publications:

[Do community-based digital health inclusion programmes contribute to tackling health inequalities in disadvantaged population groups?](#)

Shoba Poduval et al writes for BMC Public Health.

[SPCR Project: 676](#)



[Low-dose spironolactone and cardiovascular outcomes in moderate stage chronic kidney disease: a randomized controlled trial](#)

Richard McManus et al writes for Nature Medicine.

Pilot support from the School for Primary Care Research



[The Association between COVID-19 Status and Economic Costs in the Early Stages of the COVID-19 Pandemic: Evidence from a UK Symptom Surveillance Digital Survey.](#)

Sungwook Kim et al write for PharmacoEconomics - Open.

[SPCR Project: 620](#)



Publications (Continued):

[Quality and Misinformation About Health Conditions in Online Peer Support Groups: Scoping Review.](#)

Bethan Treadgold et al writes for Journal of Medical Internet Research.

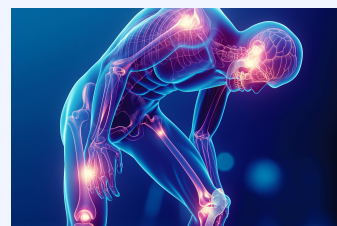
B Treadgold was funded by SPCR Postdoc Fellowship (C079)



[Healthcare use and its variation in people with fibromyalgia: a systematic review protocol.](#)

Ailish Byrne et al write for Cambridge Core.

A Byrne was funded by SPCR Studentship (C104)



Follow and Subscribe:

NIHR
SPCR



[Website](#)

[Bluesky](#)

[YouTube](#)

[Newsletter](#)

