

Welcome to the latest edition of the NIHR School for Primary Care Research (SPCR) newsletter.

Welcome to the November 2025 edition of the NIHR School for Primary Care Research (SPCR) Newsletter, sharing the latest funded research, mental health programme updates, PPIE opportunities, and highlights from across our primary care research community.

News:

Primary Care Nursing Update 2025

Over the past year, several events have provided opportunities to share ongoing work in SPCR primary care nursing research and strengthen collaboration within the community.



[READ MORE](#)

BJGP press release on SPCR-funded research on violence and abuse of general practice staff

Funded by the NIHR School for Primary Care Research, a recent scoping review analysed evidence from 50 studies across 24 countries on violence and abuse directed at general practice staff by patients and the public.



[READ MORE](#)

New SPCR Study Highlights How to Support GPs for Better Patient Care

A new study funded by the NIHR School for Primary Care Research (SPCR) by the University of Oxford has found key factors that help sustain general practitioners (GPs) in their roles, ultimately supporting more effective and equitable patient care.



[READ MORE](#)

SPCR Celebrates Awardees Following 2025 Travel Bursary Competition

The NIHR School for Primary Care Research (SPCR) is delighted to announce the winners of its 2025 Travel Bursary Competition.

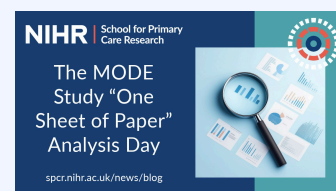


[READ MORE](#)

Blog Posts:

The MODE Study “One Sheet of Paper” Analysis Day

Sarah Price at the University of Exeter, explores how interim diagnoses develop and when they may delay cancer diagnosis.



[READ MORE](#)

Follow and Subscribe:

NIHR
SPCR

[Website](#)



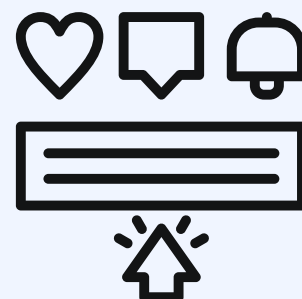
[Bluesky](#)



[YouTube](#)



[Newsletter](#)



ABSTRACT CALL: Three NIHR Schools Early Career Researcher Meeting

The NIHR Schools for Primary Care Research (SPCR), Public Health Research (SPHR), and Social Care Research (SSCR) will host a joint Early Career Researcher Meeting at The Exchange, Birmingham, on Thursday 12 March 2026, 10am - 4.30pm.

The Call for Abstracts closes on 23 December 2025, and submissions (maximum 300 words, written in plain English) should clearly describe how the work fits within one or more of the three strategic shifts as set out in the 10-Year Health Plan for England.

[READ MORE](#)



NIHR | School for Primary Care Research | NIHR | School for Public Health Research | NIHR | School for Social Care Research

NIHR Three Research Schools Early Career Researcher Meeting

Thursday 12 March 2026, 10am - 4.30pm
The Exchange, Birmingham




Sign up here

SPCR PPIE Updates:



NIHR | School for Primary Care Research

Public Involvement, Engagement and Dissemination Enablement Fund

Funding Call Now Open!

Deadline by 5pm
Thursday, 29 January 2026




SPCR has launched the 3rd round of PPIE funding to provide researchers with funds to explore and develop new relationships with groups, organisations and communities currently under-served by research or health and care in general. The deadline to apply is **Thursday 29 January by 5pm**.

[FIND OUT MORE](#)

Mental Health Programme Publications



NIHR | School for Primary Care Research

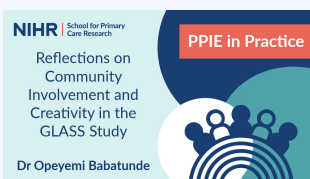
PPIE in Practice

Using creative approaches to enable patient and public involvement in a realist review: lessons from the SHADOW study

Dr Tamara Fisher (Researcher)
Anna Hough (Peer Support Worker)
Jane Southam (Public contributor)
Dr Tim Kingstone (Researcher) at Keele University



[Using creative approaches to enable patient and public involvement in a realist review: lessons from the SHADOW study](#)




NIHR | School for Primary Care Research

PPIE in Practice

Reflections on Community Involvement and Creativity in the GLASS Study

Dr Opeyemi Babatunde



[Reflections on Community Involvement and Creativity in the GLASS Study](#)

NIHR Three Schools' Updates:



NIHR | School for Primary Care Research | NIHR | School for Social Care Research | NIHR | School for Public Health Research

Evaluating how people with lived experience of multiple disadvantage can improve services

spcr.nihr.ac.uk/news



New article presents findings from a co-produced evaluation, funded by the NIHR Three Research Schools Mental Health programme, on the role of lived-experience involvement in improving services for people facing multiple disadvantage

[READ MORE](#)

ABSTRACT CALL: Three NIHR Schools Early Career Researcher Meeting

12 March 2026 in Birmingham. Deadline: 23 December 2025

Submissions should clearly describe how the work fits within one or more of the three NHS-10 year plan strategic shifts: [Submit here.](#)

Mental Health Programme Publications

- [Trauma-Informed Principles in Practice: A Mixed-Method Study of Co-Producing Systems Change With People Who Have Experienced Multiple Disadvantage](#), Michelle Farr et al writes for *Health Expectations* Volume 28, Issue 6 (MH021)

SPCR Researcher Spotlight

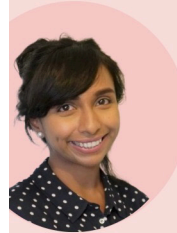
We are pleased to share the next edition of our SPCR Researcher Spotlight series, featuring two of our researchers, Dr Ali Albasri, formerly from the University of Oxford, and Dr Cini Bhanu from the University College London.

This series highlights the impact of continued SPCR research capacity and development funding since its introduction in 2010.

[READ MORE](#)

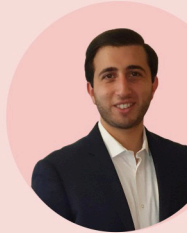
NIHR | School for Primary Care Research

SPCR Researcher Spotlight



**Dr Ali Albasri and
Dr Cini Bhanu**

Impact of short-term seed corn
or bridging awards



SPCR IN Focus | National Diabetes Awareness Month 2025



Diabetes remains one of the most pressing long-term health conditions managed in primary care. With its burden rising globally and across the UK, primary care teams play a pivotal role – from early detection of risk, through supporting self-management, to monitoring and treating complications. The SPCR has funded research project that advocate for better care and support for those living with the disease, these are some of the more recent projects: [READ MORE](#)

Publications:

[Testing the activity pacing questionnaire for validity, reliability and responsiveness: An outcome measure validation study.](#) Deborah Antcliff et al writes for *The Journal of Pain* Volume 37, December 2025



Deborah Antcliff was funded through a Post-doc fellowship (C075)

Publications (Cont):

[Associations between gestational diabetes and cardiovascular disease largely operate independently of postpartum causal pathways: A population-based cohort study in England.](#) Nerys M. Astbury et al writes for *Diabetes, Obesity and Metabolism*



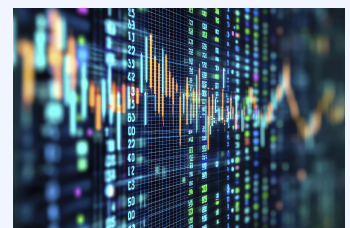
[SPCR Project: 562](#)

[Developing the PATH-GP \(Prevention and Testing for HIV in General Practice\) intervention: a person-based approach intervention development study to increase HIV testing and PrEP access.](#) Jo Kesten et al writes for *British Journal of General Practice*



[SPCR Project: 599](#)

[‘Getting it write’ in an era of online electronic health records access in primary care: A qualitative study exploring the needs and requirements of underserved patients and carers.](#) Gail Davidge et al writes for *Patient Education and Counseling* Volume 138



[SPCR Project: 608](#)